



The impact of publishing peer review reports: the Elsevier trial

Giangiacomo Bravo¹, Emilia López², Francisco Grimaldo³,
Bahar Mehmani⁴, Flaminio Squazzoni⁵

¹Linnaeus University Vaxjo, ²Catholic University of Valencia,
³University of Valencia, ⁴Elsevier, ⁵University of Brescia

PEERE International Conference on Peer Review.
Rome, Italy. March 7th-9th, 2018.



In November 2014, five Elsevier journals agreed on ...

- ... publishing peer review reports**
- ... along with published articles**
- ... with a separate DOI and fully citable on ScienceDirect**



Annals of Medicine and Surgery

Volume 4, Issue 1, March 2015, Pages 58-60



Annals of Medicine and Surgery

journal homepage: www.annalsjournal.com



Peer review report

Peer review report 3 on Long-term Results of Open repair of Popliteal Artery Aneurysm

Long-term results of open repair of popliteal artery aneurysm

M.U. Wagenhäuser✉, K.B. Herma✉¹
Duran✉¹

[+](#) Show more

<https://doi.org/10.1016/j.amsu.2015.01.001>

Under a Creative Commons license

Original Submission

Recommendation

Reject - invite resubmission.

Comments to the author

This paper describes treatment of popliteal artery aneurysm (PAA) from a single centre. Only 30 patients, operated on 42 legs. Open operation with medial approach in all cases. All aneurysm were resected at the operation. Different subgroups of the PAA are based on morphology, symptomatic or asymptomatic.

Control examination and assessment of the quality of life with clinical examination/duplex sonography and a homemade questionnaire.

Good operative results and patency in accordance with other

The outcome of this paper is not accordance with the title. The descriptions of the long-term results are few and weak. The operation technique could be better described in details. The anatomic dissemination of the aneurysm could be of interest for other surgeons who would like to use this approach instead of the posterior approach. The analysis of the 8 patients, who were deceased or did not participate in the control examination, could be more detailed, ex. From which group did they come and what did they die from?

The 12 patients who had bilateral operations: Symptoms from the legs, which group did they belong to; asymptomatic or symptomatic?

The answers from these 12 patients in the questionnaire: Did they get two or one questionnaire? How did the author assess the information from these questionnaires? Which leg was of current interest?

The discussion is very focused on endovascular treatment. The discussion consists of 36% of treatment which is not the author's treatment of choice and only 7% questionnaire review.

Referred to by Peer review report 3 on Long-term Results of Open repair of Poplite...

Annals of Medicine and Surgery, Volume 4, Supplement 1, January–December 2015, Pages S1



A survey was made (listen to Bahar tomorrow) but ...
... they wanted to double check the results with data



THE A - TEAM

A survey was made (listen to Bahar tomorrow) but ...

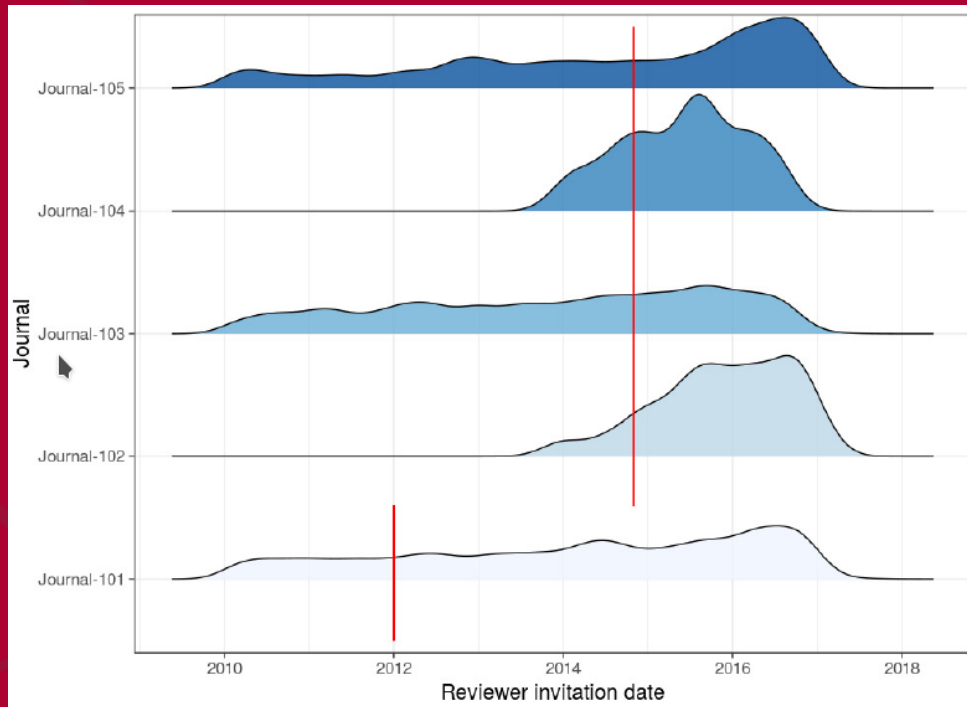
... they wanted to double check the results with data

Today, still wanted by the EU we survive as scientists of fortune.

If you have a problem, if no one else can help, and if you can find them....maybe you can hire The A-Team



The dataset



5 journals

January 2010 – November 2017

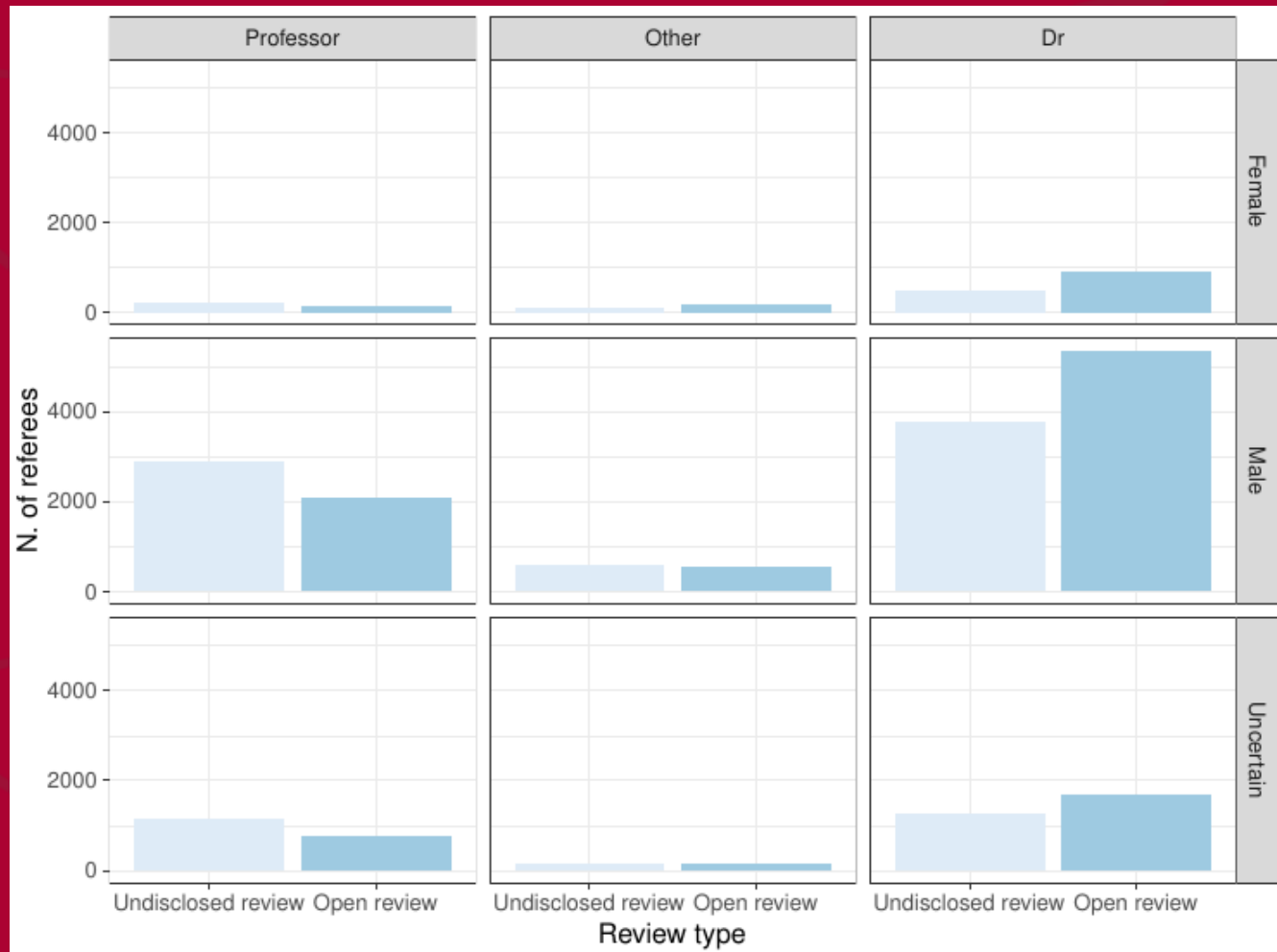
6406 submissions

62790 invitations (1st round)

22488 agree to review

18525 completed reviews

We added two fields





Hypotheses

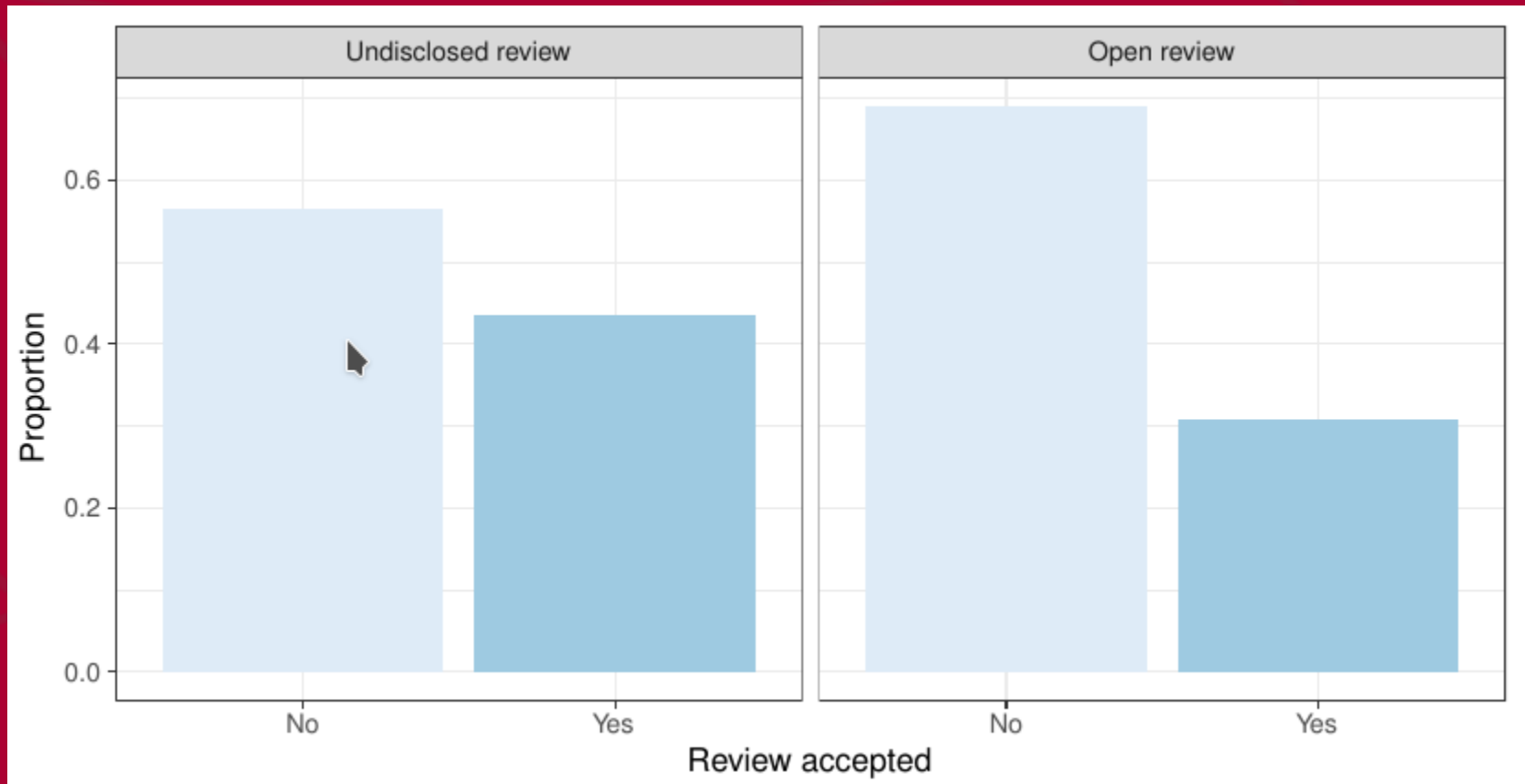
Publishing PR reports may affect ...

... the referee's willingness to review

... the type of recommendations

... the turn-around time

... the referee's willingness to review





... the referee's willingness to review

Is this just the effect of the increase of invitations?

We built a mixed-effects logistic model → review acceptance

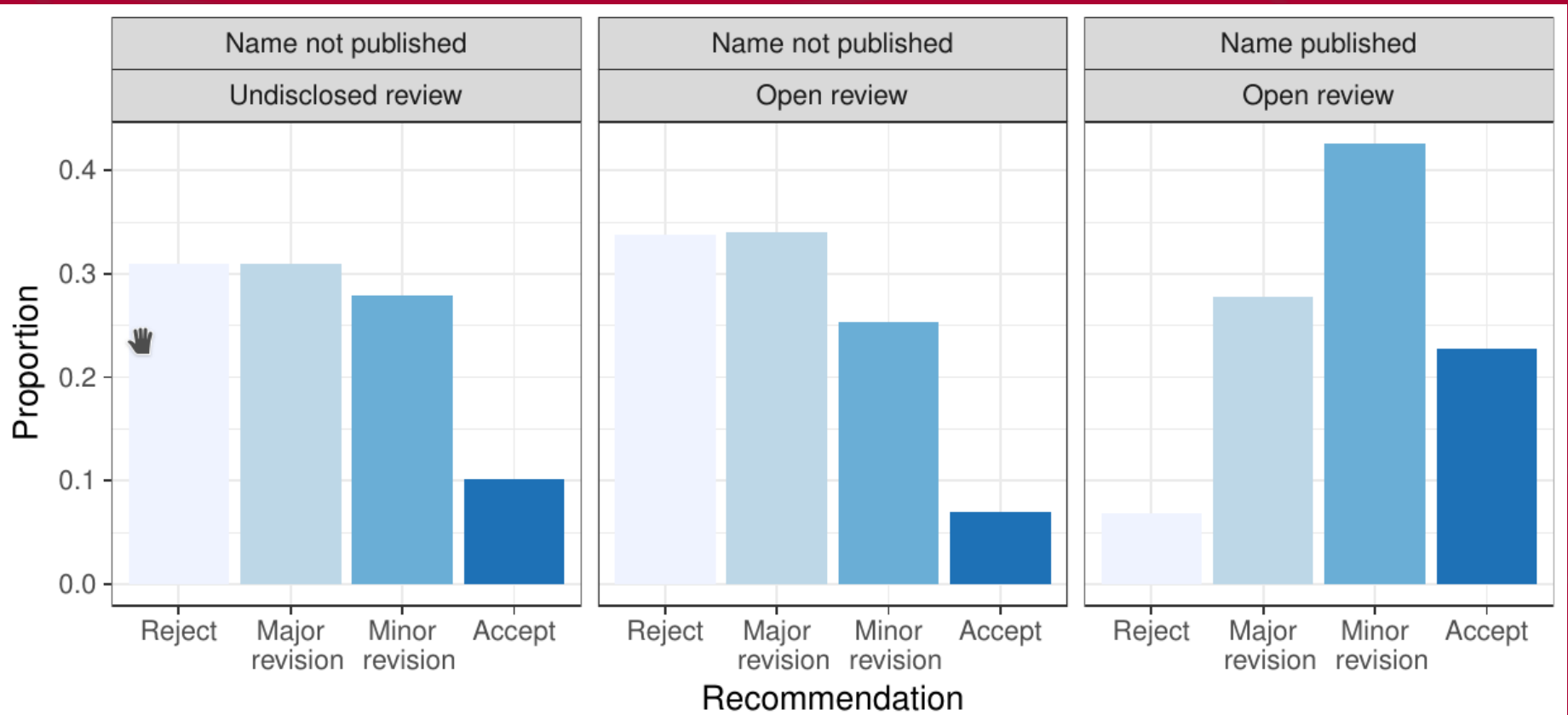
Random effects: journal & submission

Fixed effects: Review model (Undisclosed, Open)
Status (Professor, PhD, Other)
Gender (Female, Male)
Year

Fixed effects	Estimate	Std. Error	z-value	p-value
(Intercept)	-0.201	0.216	-0.927	0.354
Open review	-0.043	0.074	-0.585	0.559
Title: Other	-0.455	0.051	-8.924	0.000
Title: Dr	-0.130	0.031	-4.238	0.000
Gender: Male	0.265	0.050	5.328	0.000
Gender: Uncertain	0.334	0.056	6.009	0.000
Year	-0.119	0.009	-13.070	0.000
Open review × Title: Other	0.230	0.069	3.320	0.001
Open review × Title: Dr	0.002	0.042	0.059	0.953
Open review × Gender: Male	0.004	0.063	0.059	0.953
Open review × Gender: Uncertain	0.009	0.071	0.128	0.898

... the type of recommendation

Only 6.6%



... the type of recommendation

Fixed effects	Estimate	Std. Error	z-value	p-value
Open review	0.038	0.121	0.311	0.756
Status: Other	-0.205	0.089	-2.297	0.022
Degree: Dr	-0.073	0.046	-1.594	0.111
Gender: Male	0.006	0.080	0.075	0.940
Gender: Uncertain	0.096	0.088	1.084	0.278
Year	-0.028	0.013	-2.057	0.040
Open review × Title: Other	0.626	0.123	5.073	0.000
Open review × Title: Dr	0.093	0.066	1.415	0.157
Open review × Gender: Male	0.056	0.105	0.535	0.593
Open review × Gender: Uncertain	-0.156	0.116	-1.348	0.178

Mixed-effects cumulative-link model

... the time taken to review

Average time grows from 28.3 to 30.2 days but...

Fixed effects	Estimate	Std. Error	DF	t-value	p-value
(Intercept)	32.577	5.748	4231	5.667	0.004
Open review	1.391	1.276	17796.166	1.090	0.276
Title: Other	-1.179	0.912	17780.869	-1.293	0.196
Title: Dr	-1.400	0.478	17889.760	-2.930	0.003
Gender: Male	-1.722	0.851	17700.393	-2.022	0.043
Gender: Uncertain	-2.139	0.928	17683.305	-2.305	0.021
Year	-1.198	0.142	8313.671	-8.442	0.000
Open review × Title: Other	1.216	1.275	17959.081	0.953	0.340
Open review × Title: Dr	1.508	0.685	18033.029	2.202	0.028
Open review × Gender: Male	-0.567	1.106	17807.002	-0.513	0.608
Open review × Gender: Uncertain	-0.268	1.221	17802.006	-0.220	0.826

Mixed-effects linear model



Summing up

Transparency and openness did not end in failure

Publishing PR reports did not seem to change or burden the process

Younger and non academic experts seemed to be more keen to accept and to provide more positive recommendations in open review

Future work

Sentiment analysis of the text of the reports might provide more insights about the type recommendations sent by referees



Thank you very much!

Any question?